

Eagle Claw Operation Guide

Revolutionary Pipe Assembly Tool



Click the link below to visit our website:

<http://propipesolutions.com>

Brought to you by: Pro-Pipe Solutions - Visit our website: <http://propipesolutions.com>



Prior to insertion the “STOP LINE” should be visible.

If there is no “STOP LINE” refer to the pipe manufacturer to determine proper insertion depth.



Carefully apply a generous amount of approved pipe lubricant to the spigot end of the pipe taking care to prevent foreign matter from being accumulated in the lube.

Note: adequate lube makes assembly easier.



Ample lubricant will make the assembly of the joint easier.

Lack of lubricant will make the joint more difficult to assembly.

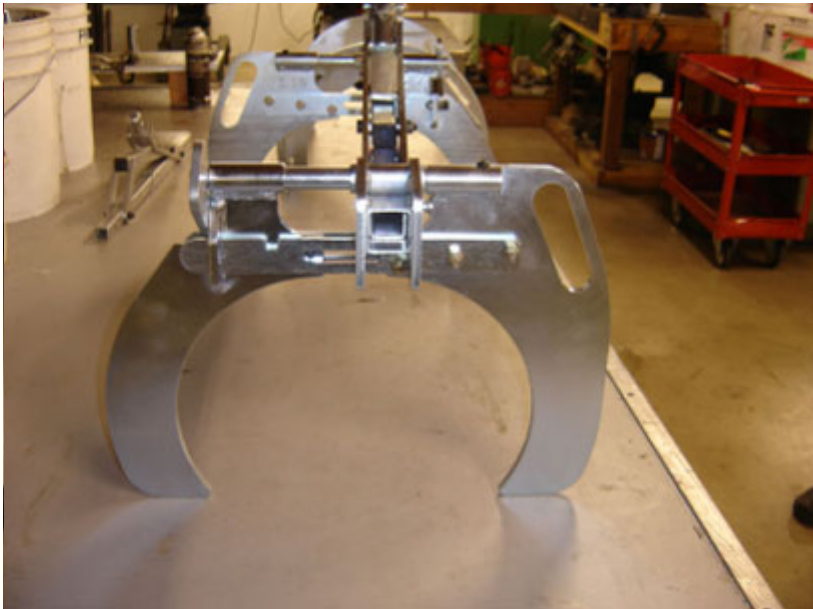


Once adequately lubed carefully slide the joint together without picking up any foreign matter in the lube.

In some cases it will be possible to slide the joint together to the gasket.



The pre-insertion assembly of the joint will distribute the lubricant to the points required for assembly.



The EAGLE CLAW consists of three components. The Puller Body, The Drop-On Claw and the Drop-On Yoke.

The Drop-On Yoke is a clamping device that encircles the pipe behind the bell.

It is a precision fit that once dropped onto the pipe and latched in the closed position provides a close fit to the pipe diameter.



The Drop-On Yoke attaches to the Puller Body with a pin that inserts through a hole in the receiver of the Yoke and through a hole in the larger end of the Puller Body.

The Drop-On Yoke is a non-moveable clamp.



The Drop-On Claw is a moveable clamp that fits similarly on the spigot end of the pipe.

It is clamped and latched onto the pipe as is the Yoke.

The binding action of the Claw as it rotates provides the gripping action on the Spigot End.



The Claw and the Yoke both have a latch that must be completely closed after the clamps are pushed together to secure them to the pipe.

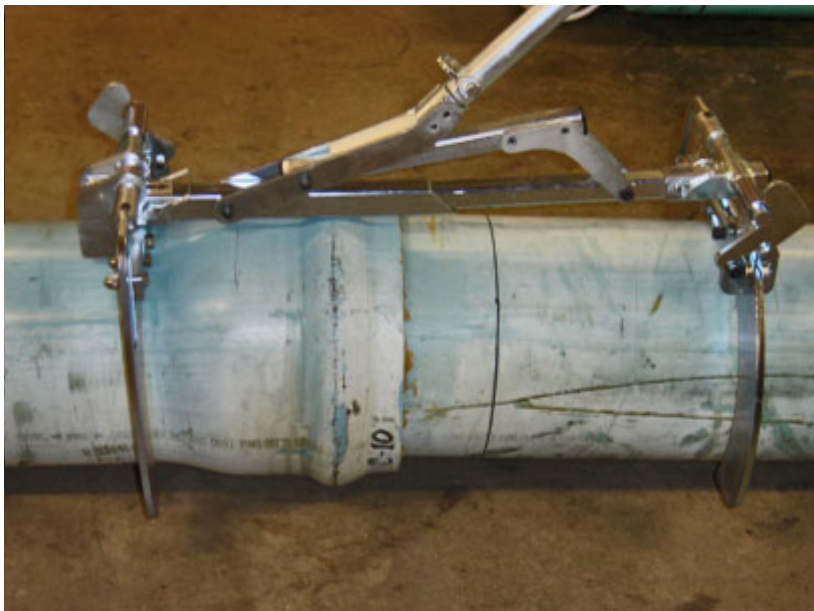


The completely assembled EAGLE CLAW will look like this when ready for work.

The Claws and Yokes will assemble to only one end of the Puller Body due to the size of the receiver ends.



Extend Puller Body to maximum length prior to placing on pipe.



Pick up the EAGLE CLAW and drop onto the pipe with the Yoke on the bell end behind the bell from the spigot end and the Claw resting on the spigot end.



Close and latch the Yoke making sure the latch has dropped completely into the slot.

A pin may be inserted through the holes provided in the latch for a more secure connection.



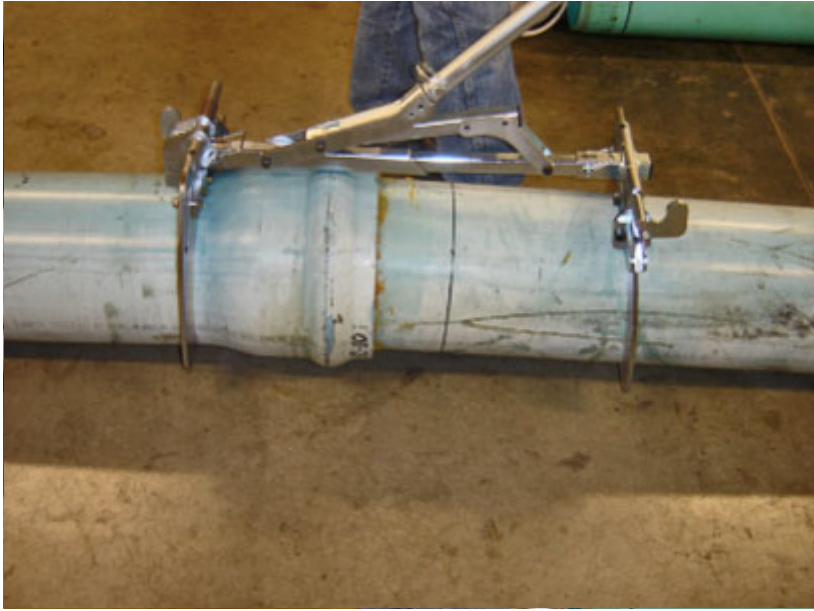
After closing ensure that the Yoke rests up against the shoulder of the bell.



Extend the Puller Body completely and close the Claw around the Spigot End.

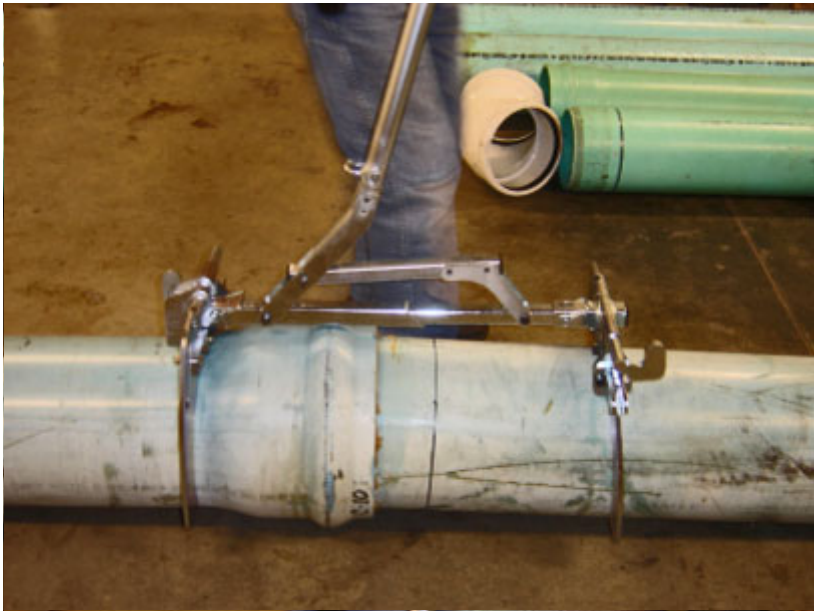


Latch the Claw as previously with the Yoke.



Pulling the "T" handle toward the bell or Yoke end will result in the spigot end being inserted into the bell end.

Enough force can be easily generated for a complete and controlled insertion to the stop mark.



Be careful not to insert past the "Stop Line". If this happens backing the pipe out is an easy operation.

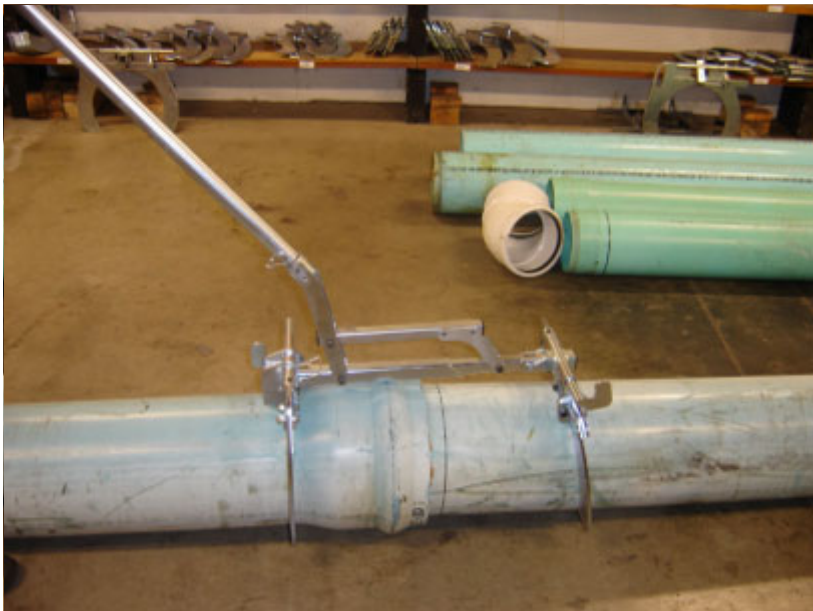


Notice the angled position of the Claw.

This provides the interference grip on the spigot end.

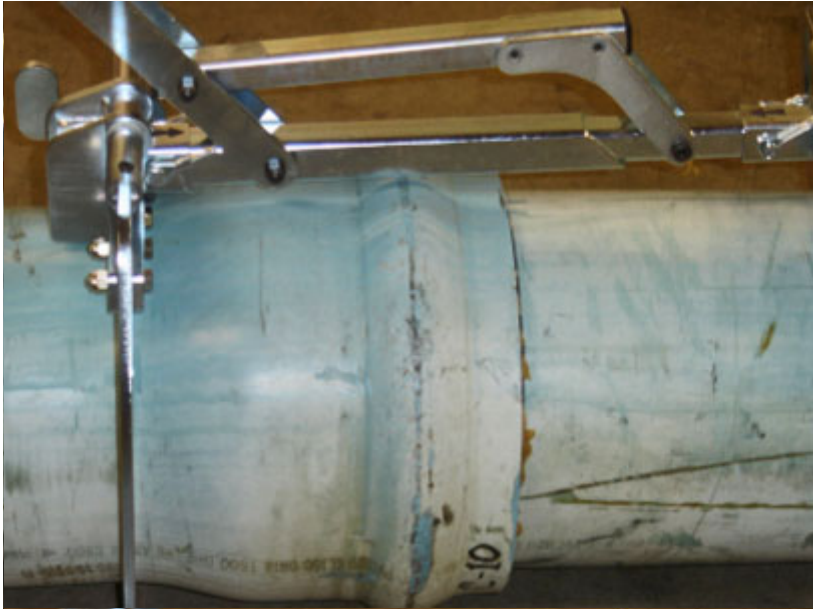
Lube or other foreign matter between the Claw and the pipe may cause the Claw to slip on the pipe.

Simply clean and proceed.

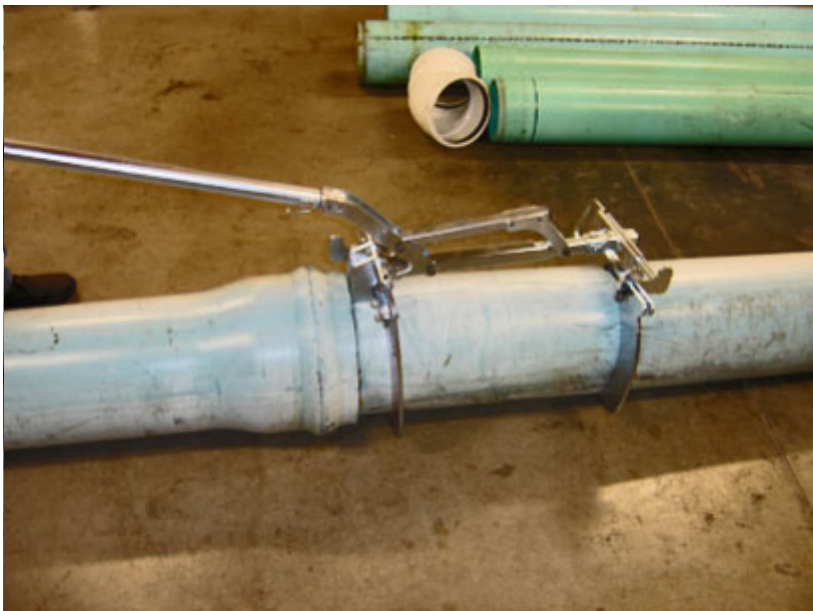


In most cases one complete pull of the handle will complete the insertion.

If at the end of the Puller Body travel the pipe is not completely inserted simply re extend the Puller Body and re-set the claw then complete the insertion.



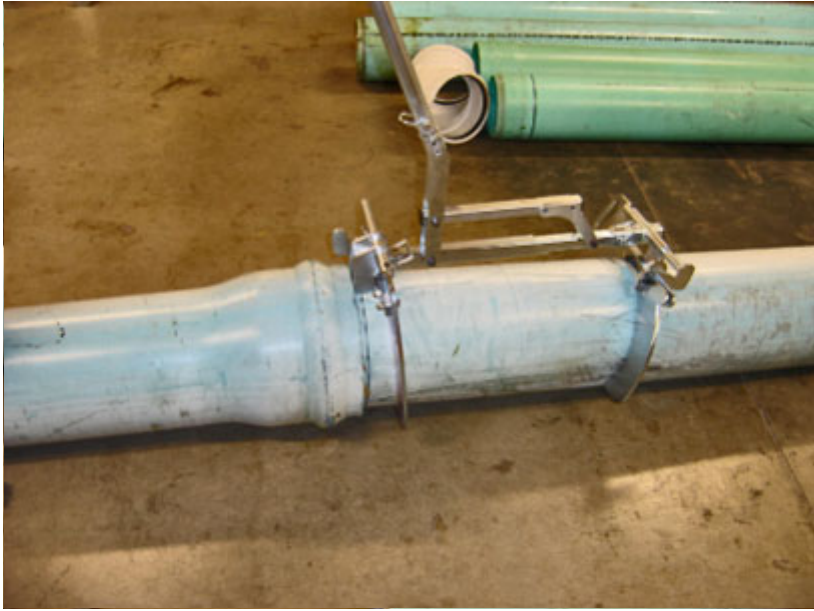
A completed insertion with the "Stop Mark" still visible at the end of the bell.



Application of the Eagle Claw for disassembly or un-belling the pipe.

As shown, collapse the Puller Body and set the Eagle Claw on the pipe with the Yoke closed and resting against the end of the bell.

The Claw will be rotated toward the bell end.



Pushing the "T" handle to extend the Puller Body will push the spigot end out of the bell end.

Caution! Waiting too long after pipe is assembled may make disassembly impossible due to lubrication drying.



The position of the Drop-On Yoke on the pipe against the bell end.



The joint slides apart.



Once again if complete disassembly is not achieved simply re-collapse the Puller Body and re-set the Claw and then complete the disassembly.



Completely disassembled pipe.

Spline Lock Application



Brought to you by: Pro-Pipe Solutions - Visit our website: <http://propipesolutions.com>



As with other pipe and fittings installations the application of ample lubrication is of the utmost importance.

After lubricating, align the coupling with the spigot with the end of the pipe, ensuring the spline grooves in the coupling as well as the one on the pipe are free of foreign material.

Pre-insert the pipe into the coupling.



After aligning and pre-inserting set the Eagle Claw complete with the appropriate size drop-on claw and spline lock adaptor and the pipe / coupling assembly with the bail of the spline lock over the open end of the coupling and the drop on claw locked onto the spigot end of the pipe as shown in the photo.

Then simply pull the handle toward the pipe to assemble the coupling onto the pipe inserting the spline while holding pressure on the handle.



After assembly of the coupling onto the spigot end of the pipe pre-insert the opposing spigot pipe end into the open end of the coupling and bring up against the “O” ring.

Reverse the direction of the Eagle Claw and set on top of pipe.

Allow the bail on the Spline Lock adaptor to hinge up and lay on pipe.

The coupling should now be between the yoke of the Spline Lock adaptor and the drop on claw.

Pull handle to pull the spigot end into the coupling once again holding pressure until the spine is inserted.



To disassemble a spline lock joint proceed as follows:

Remove the spline and set Eagle Claw on top of pipe as described in the previous operation except slide the Spline Lock adaptor yoke against the coupling on the same side as the Drop-On Claw. Refer to photo.

Slant the Claw bottom toward the coupling so that the binding action allows the yoke to push the pipe apart when the handle is pushed.



To remove the coupling from the pipe simply rotate the Eagle Claw 180 degrees and set it on top of the remaining spigot and facing the coupling as in the previous operation and after removing the spline push the coupling off the pipe.



Click the link below to visit our website:

<http://propipesolutions.com>